

EasyCheck Integrated Fiber Endface Inspector



Easycheck is an integrated fiber endface inspector developed by Dimension Technology; it combines optical microscope and monitor in a body other than separate designs. It has clear image and long life time. Equipped with series of adaptors, Easycheck can inspect every kind of optical connectors.

Main Features

- Integrated design
- Encircled focus design
- Dust-proof design
- Humane safety design
- Magnification option: 80X, 200X, 400X
- Workable with Easyget portable inspector

High Definition Images

With coaxial illumination optic magnify system, Easycheck can easily find the slight defects and scratches on fiber endface. High resolution image sensor and 8" pure black and white digital TFT LCD can show the most real details of fiber endface.

Image Input & Output

Easycheck provides image input and output functions to fulfill the various demands of customers. The Easycheck can be connected to Easyget portable inspector to test different female types of connectors.

Applications

- All kinds of fiber connectors , Optic transceiver Module , TOSA/ROSA components and so on.

Integrated Design

Easycheck has a compact size due to the integrated design and saves working space. It is a great breakthrough compared with other traditional fiber optic endface inspectors of separate structure, and can get rid of the annoying cables between monitor and microscope.



Various interface designs

Easycheck has an extensive range of adaptors and can check all kinds of fiber connectors (MPO/MTP, MT-RJ connector), Optic transceiver Module (40G -100G MPO Module, SFP, XFP, QSFP) , TOSA/ROSA components and so on.



MPO Connector Inspection



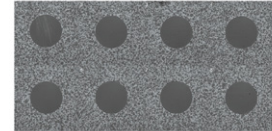
TOSA & ROSA Inspection



LC Transceiver Inspection



40G&100G Transceiver Module



Easycheck can check connectors, modules(TOSA、 ROSA), and the adjustable version can check multi-fiber connectors.



Embedded Ceramic Sleeves



Series of Adaptors

	X、 Y NOT adjustable	X、 Y adjustable
Male Adaptors	EC400BC、 EC200BC、 EC080BC	EC400KC、 EC200KC、 EC400KD
TOSA/ROSA	EC200BZ、 EC080BZ	EC200KZ
Female adaptors(transceivers)	EC200BM、 EC080BM	EC200KM

Remark: Tosa/Rosa and female(transceivers)checking, the maximum magnification times is 200X; single fiber/MPO checking, the maximum magnification times is 400X.Easycheck has two types: X,Y Axis Adjustable (4mmx4mm sight distance, for multi-fiber connectors and module inspection) and Non-adjustable; For different adaptors: Ferrules, Modules (TOSA, ROSA, BOSA for single fiber inspection) and transceiver modules (SFP, QSFP, SEF, XFP).

Specifications

Item	Parameters
Magnification	80X, 200X, 400X
Images Format	PAL
CCD Resolution	1/3" 625 Line CCD
Image Input	RCA
Image Output	RCA
Focus	Manual
Power Consumption	3W
Working Temperature	-10 C ~+40 C
Storage Temperature	-20 C ~+55 C
Easyget Input Interface	Yes
Monitor	8" TFT 800*600
Power Supply	DC 12V
Size (H*W*D)	270mmX245mmX155mm
Weight	1.6kg