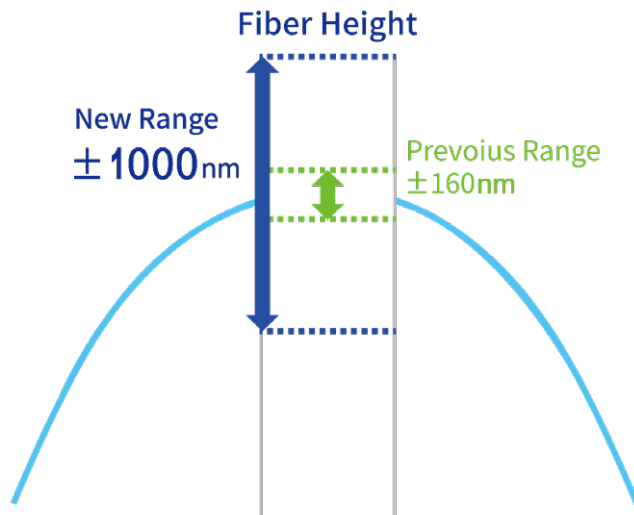


BINNA2 Fiber EndFace Interferometer



BINNA2 is the latest intelligent interferometer from Dimension Technology. Based on Dimension's success SANA2 series, new equipped Auto Focus and Auto Calibration functions make BINNA2 more powerful than ever before.

The optimized new software greatly improves the testing accuracy and speed. It takes only 0.5 seconds to complete the whole testing. The new fixture platform and structure design enhance the capacity on vibration resistance, as well as the life time and the stability.

Main Features

- -1000nm~1000 nm Fiber Height
- Auto Focus & Auto Calibration
- Only 0.5 s to complete the testing
- Excellent to rebuild 3D profile
- Measure cleave angle of bare fiber
- Stable data transmission
- Excellent resistance on vibration

Applications

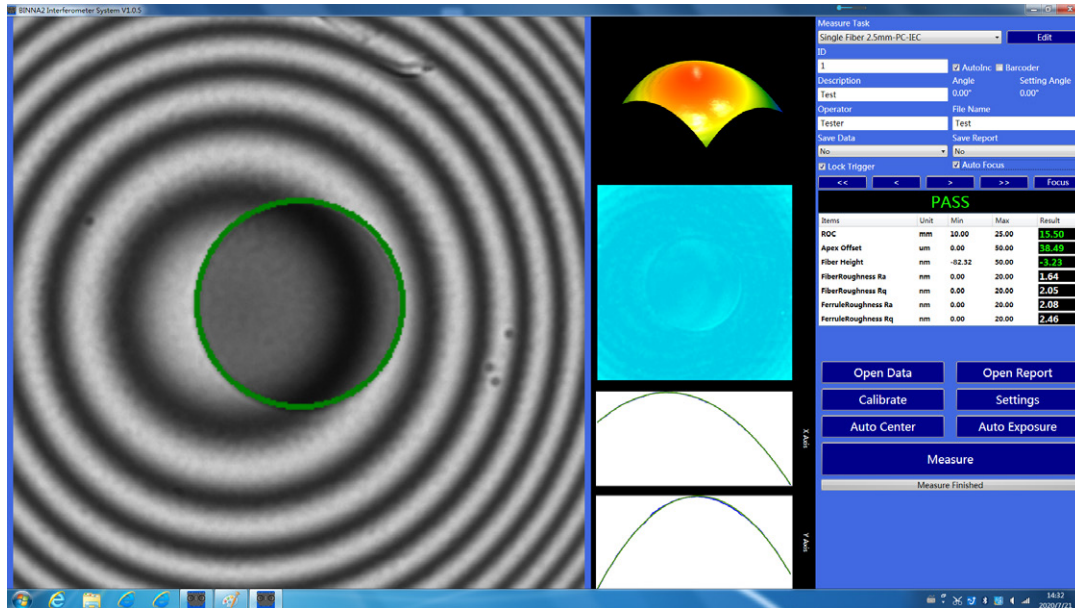
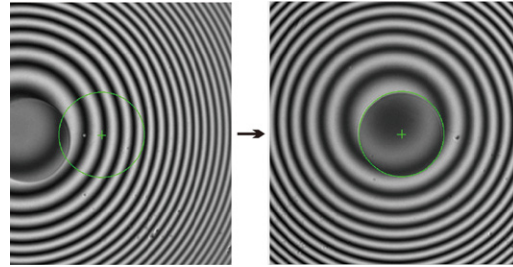
- Used for testing optical fiber devices during polishing and assembly.

-1000nm~1000 nm Fiber Height

The new optical and mechanical design extend the fiber height range to -1000 ~ +1000nm, in all testing conditions.

Auto Centering Images

BINNA 2 has auto centering image function that can find the fiber and makes it to center automatically within one click. No mouse drag or hardware adjustment is needed.



One Click Measurement

Beside of Clicking the MEASURE button, operator can press the button next to fixture to start the measurement. BINNA2 can also be configured to start the process automatically, after the fixture is detected to be locked.

Auto Focus & Auto Calibration

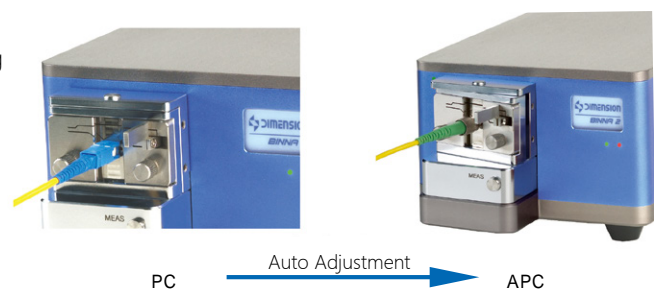
Applying the latest Dimension hardware and software, BINNA 2 can perform the focus and calibration automatically. No human interactive is needed in the whole measurement process.

Only 0.5s to Complete the Testing

The excellent software and hardware greatly improve the testing speed for BINNA2. It takes only 0.5s to complete the testing for single Fiber connector.

Angle Measurement of Bare Fiber Cutting

Dimensional technology integrates a variety of product measurement functions in BINNA2 based on customer requirements. BINNA2 can test the cutting angle of the optical fiber.



Concentricity Tester-Fiber Stub

The accuracy of APC angle control is 0.003° . The angle tuning is automatic with preset range from $0\sim 12^\circ$.

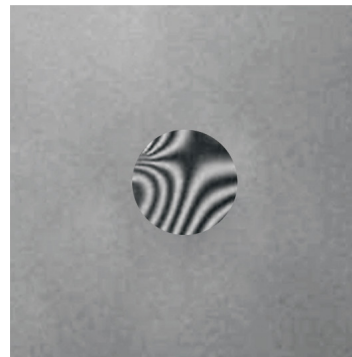
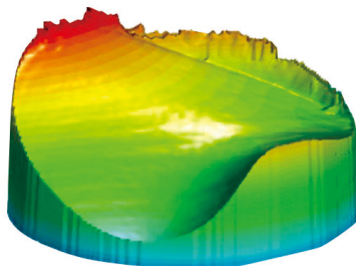
Self-adapted Locking Strength

With the special designed self-adapted locking fixture, the strength to lock the ferrule is consistent. The fixture abrasion is limited and the life cycle of fixture is longer than ever before.



Stable data connection and excellent anti-vibration

BINNA2 continue to use USB3.0 cable as other Dimension interferometers did, to ensure stable and high speed data transmission at any conditions. The unique hardware design helps to maintain the stable and accurate testing result even at factory field with a lot of vibration.



Specifications

Ltem	Range	Repeatability	
ROC(mm)	3~Flat	$\pm 0.3\%$	
Apex Offset(um)	0~250	± 0.5	
Fiber Height (nm)	-1000~1000	± 1	
APC Angle (°)	0~12	± 0.01	
Endface Resolution			0.29um
Data Link			USB3.0
Power Supply			DC24V
Size(HXWXD)			283mmX150mmX108mm

Repeatability values are calculated 50 continuous measurements without insertion and rotation of the connector between measurements. Stability values are calculated from 50 times continuous measurements with insert and pull from fixtures between measurements.

Dimension Technology Co.,Ltd

Tel: +86 755-26480850

Email: sales@dimension-tech.com

Web: www.dimension-tech.com