

# SmartCheck Integrated Fiber Endface Inspector



Smartcheck is the first intelligent endface inspector developed by Dimension Technology. It has many automatic intelligent functions such as auto analyze, auto focus and auto change fiber functions. It makes inspection smart and efficient.

## Main Features

- Automatic Analysis
- Automatic Decision
- Automatic Focusing
- Automatic Fiber Switch
- High Test Speed: 5S for 12 core MT connector
- Easy exchanged between PC & APC,
- Multi fixtures for most types of connectors

### Automatic Analysis

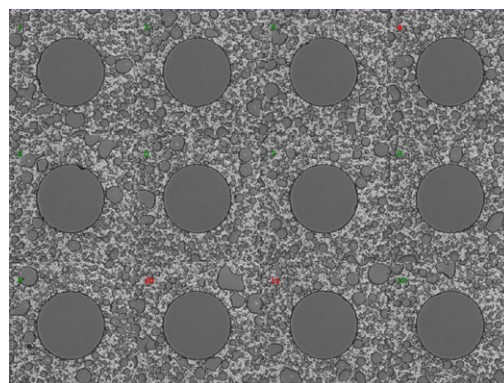
With advanced software algorithms, SmartCheck can detect and judge the slightest defects and scratches on the endface accurately and automatically without manual intervention.

### Automatic Reporting

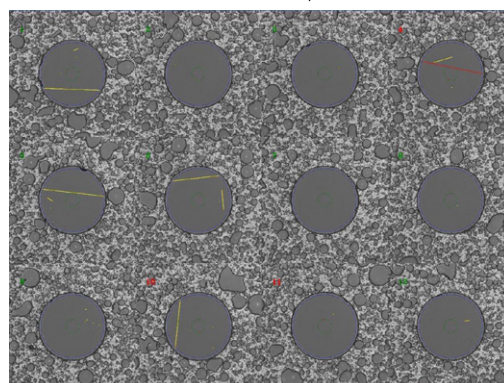
SmartCheck can generate data and reports in Excel format for each measurement automatically, which can make each inspection easy to record and traceable.

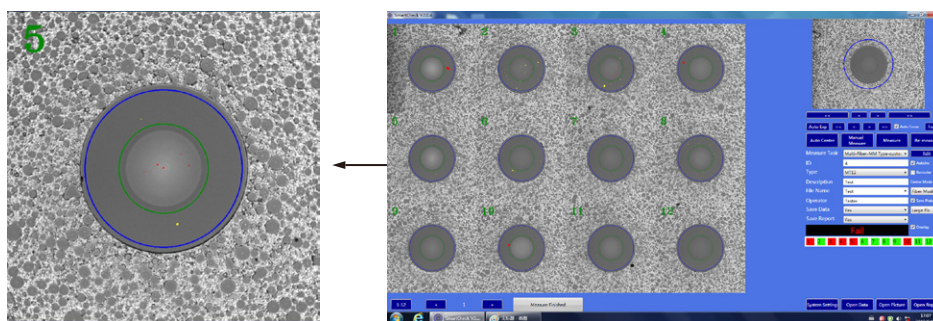
## Applications

- single and multi-fiber connectors
- Multi-fiber module



Automatic analysis ↓





## High Test Speed

With well designed optical system and automatic platforms, Smartcheck only needs 5s to test 12 core multi-fiber connectors efficiently.

## One-click Operation

After inserting the fiber connectors, Smartcheck can test all the endface up to 72 core fibers just in one-click on "Measure" button.

## High Definition Images

Equipped with high quality optical components and high solution CCD, SmartCheck can get the ultra clear images to ensure the accuracy of inspection. With locked USB wire, Smartcheck can keep a stable data connection, and work well under vibration condition.

## Real-time Statistic System

Designed by server/user way, Smartcheck can transmit the testing results to the operator for real-time browsing by internet to help monitor and control the quality.

## Customizable Inspection Standard

Smartcheck offers many kinds of judgment standards to meet the customized needs of different customers. You can set and adjust the range of the zone, quantity, length and width of the scratches, quantity and size of defects easily, which will save labor time and improve production efficiency.

## Specifications

Item	Parameters	
Type	400X	200M
Magnification	20X	10X
Resolution	0.27um	0.54um
Testing Connectors	Singer fiber, MTRJ, MPO, MTP (2-72 core)	Multi-core optical module
Testing Speed	5s (12 core,excluding the auto focusing time)	
Scan Distance	6mmX15mm	6mmX3mm
Data Link	USB 2.0	
Power Supply	DC 24V	

**Dimension Technology Co.,Ltd**

Tel: +86 755-26480850

Email: sales@dimension-tech.com

Web: www.dimension-tech.com